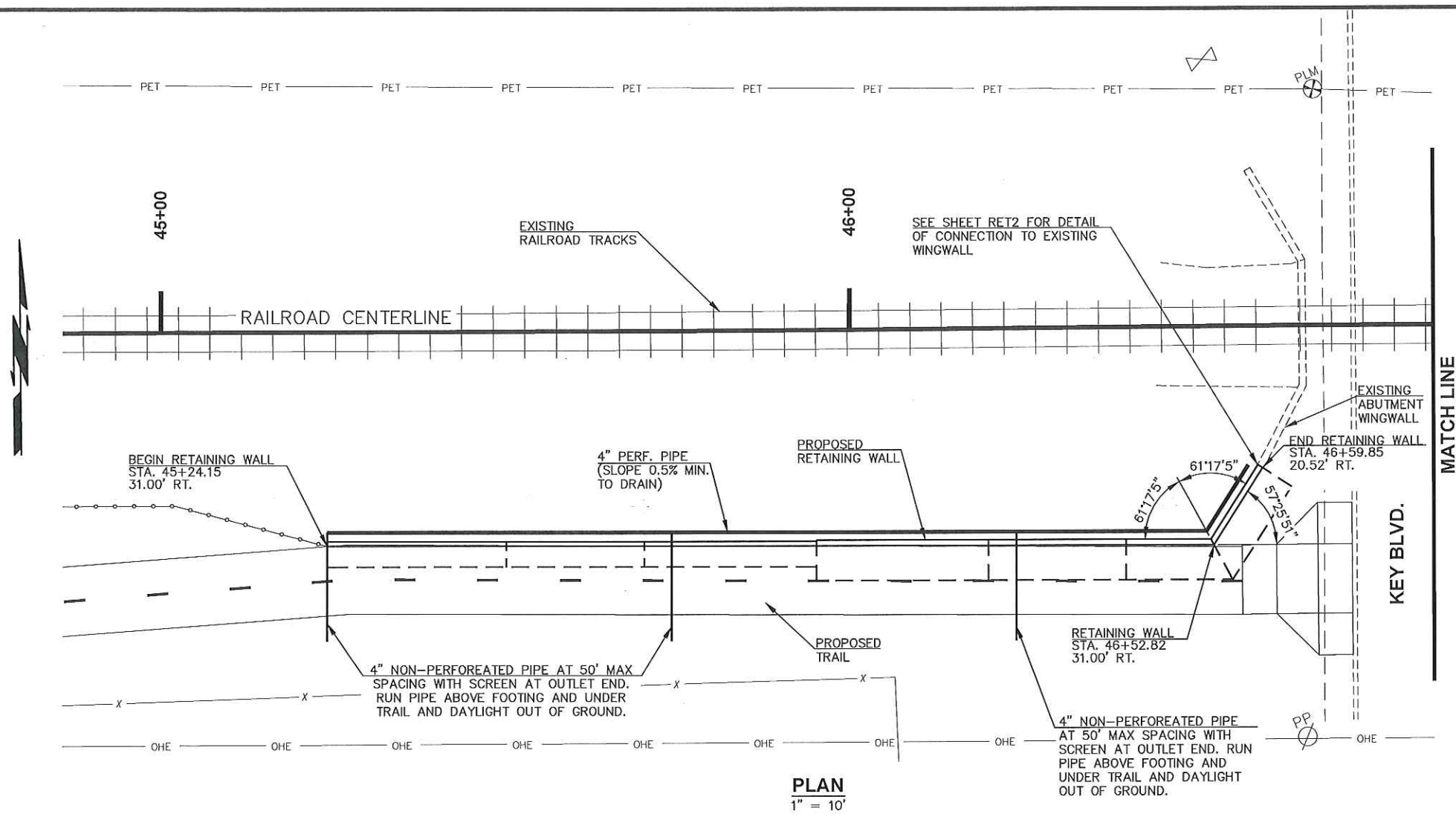


DESCRIPTION	REVISIONS	DATE



PLAN
1" = 10'

MATERIAL STRESSES

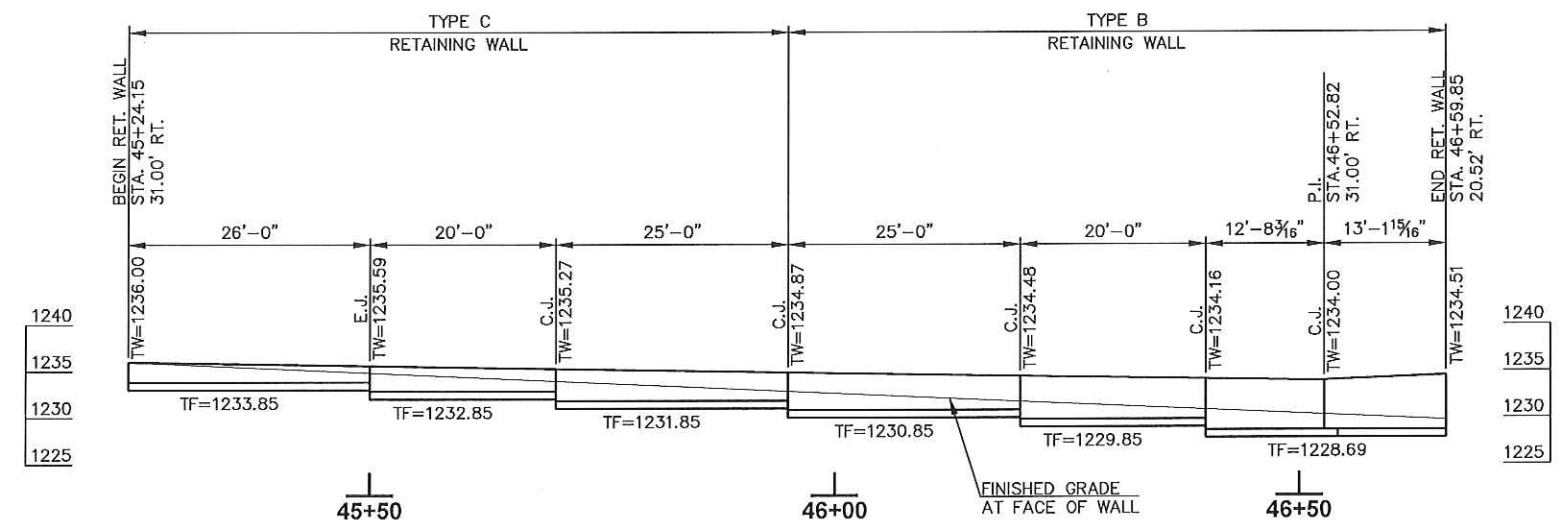
CLASS A CONCRETE $f'_c = 3$ K.S.I.
 REINFORCING STEEL (GRADE 60) $F_y = 60$ K.S.I.

DESIGN CRITERIA

- * UNIT WEIGHT OF SOIL = 130 P.C.F
- * SOIL ANGLE OF INTERNAL FRICTION = 27°
- * FOOTING COEFFICIENT OF FRICTION = 0.3
- * SLOPE OF BACKFILL = 20°
- * ALLOWABLE BEARING PRESSURE = 1,500 P.S.F
- * ASSUMED VALUES

CONSTRUCTION SPECIFICATIONS

COMPLY WITH THE REQUIREMENTS OF THE 2009 OKLAHOMA STANDARD SPECIFICATIONS FOR HIGHWAY CONSTRUCTION EXCEPT AS MODIFIED BY THE PLANS AND SPECIAL PROVISIONS.



ELEVATION
1" = 10'

NOTES:

- FOOTING EXCAVATIONS SHALL BE KEPT CLEAN OF WATER AND DEBRIS.
- FOOTING SHALL BEAR ON SOIL AT LEAST TWO FEET BELOW FINISH GRADE.
- TW DENOTES TOP OF WALL.
- TF DENOTES TOP OF FOOTING.
- C.J. DENOTES CONSTRUCTION JOINT.
- E.J. DENOTES EXPANSION JOINT.

PLOTTED: Friday, October 28, 2016 @ 11:38AM



MKEC ENGINEERING INC.
 JONATHAN T. HISEY
 OKLA. REG. NO. 23127
 CA-2958
 EXP. 6/30/17

DESIGN	J.T.H.
DRAWN	H.W.L.
CHECKED	J.T.H.
APPROV.	J.T.H.
SQUAD	MKEC ENG.

CITY OF MIDWEST CITY OKLAHOMA COUNTY
RETAINING WALL PLAN AND ELEVATION (SHEET 1 OF 2)
 JOB PIECE NO. 31435(04) SHEET NO. RET3